

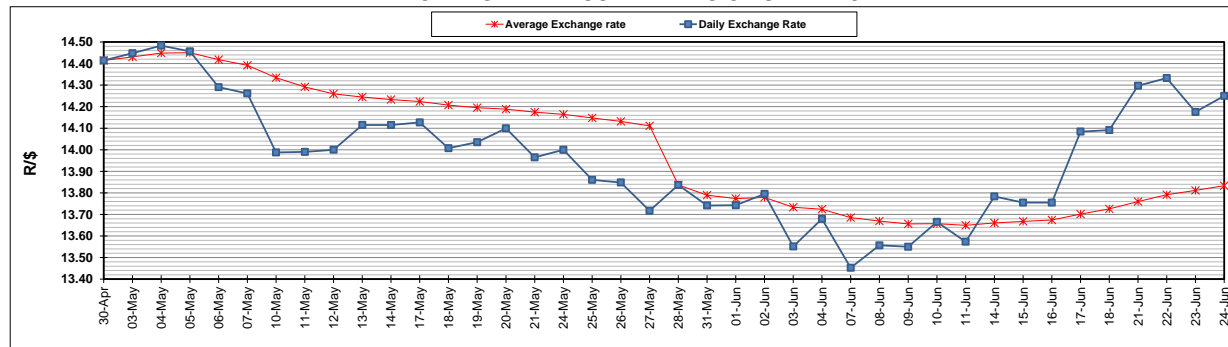
	PETROL 95 ULP	PETROL 93 ULP & LRP	DIESEL 0.05%	DIESEL 0.005%	ILL. PAR.
GAUTENG PUMP PRICE (SA c/l) AS FROM 02/06/2021	1,713.000	1,691.000	-	-	-
WHOLESALE PRICE (SA c/l) AS FROM 02/06/2021	-	-	1,466.620	1,471.020	877.488
SINGLE NATIONAL MAXIMUM RETAIL PRICE	-	-	-	-	1,102.000
BASIC FUEL PRICE - 24/06/2021 (SA c/l)	791.105	782.041	753.824	757.545	731.595
PRESS RELEASE CONTRIBUTION TO BFP 02/06/2021 - 24/06/2021 (SA c/l)	717.170	705.170	679.630	684.030	664.128
UNIT OVER/(UNDER) RECOVERY - 24/06/2021 (SA c/l)	(73.935)	(76.871)	(74.194)	(73.515)	(67.467)
AVERAGE BASIC FUEL PRICE 28/05/2021 - 24/06/2021	732.760	724.356	711.703	715.229	690.219
AVERAGE UNIT OVER/(UNDER) RECOVERY 28/05/2021 - 24/06/2021	(14.090)	(17.686)	(35.073)	(34.349)	(29.091)

### ANALYSIS MOVEMENT OF AVERAGE OVER/(UNDER) RECOVERY

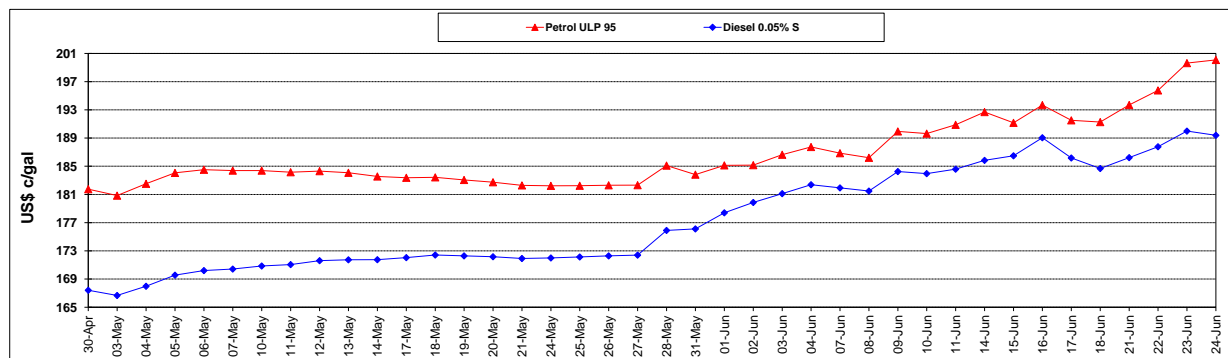
	PETROL 95	PETROL 93	DIESEL 0.05%	DIESEL 0.005%	ILL. PAR.
- MOVEMENT IN INTERNATIONAL PRODUCT PRICES	(28.795)	(32.222)	(49.355)	(48.702)	(42.942)
- MOVEMENT IN EXCHANGE RATE	14.705	14.536	14.282	14.353	13.851
AVERAGE UNIT OVER/(UNDER) RECOVERY 28/05/2021 - 24/06/2021	(14.090)	(17.686)	(35.073)	(34.349)	(29.091)

### R/\$ EXCHANGE RATE - (R/\$14.2498- 24/06/2021)

#### EXCHANGE RATE USED IN BASIC FUEL PRICE



#### INTERNATIONAL PRODUCT PRICES OF BASKET USED IN BASIC FUEL PRICE



#### BASIC FUEL PRICE IN SA CENTS PER LITRE

